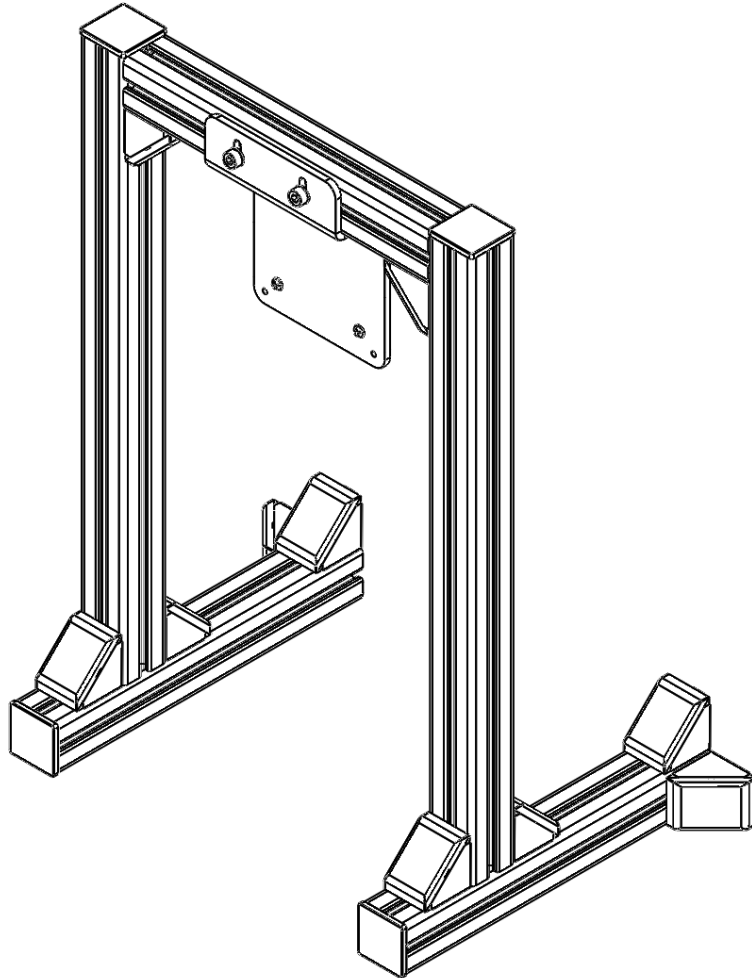
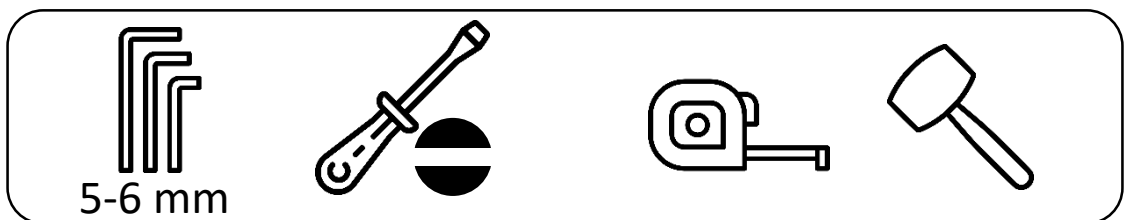


BASIC MONITOR MOUNT

INSTRUCTION MANUAL

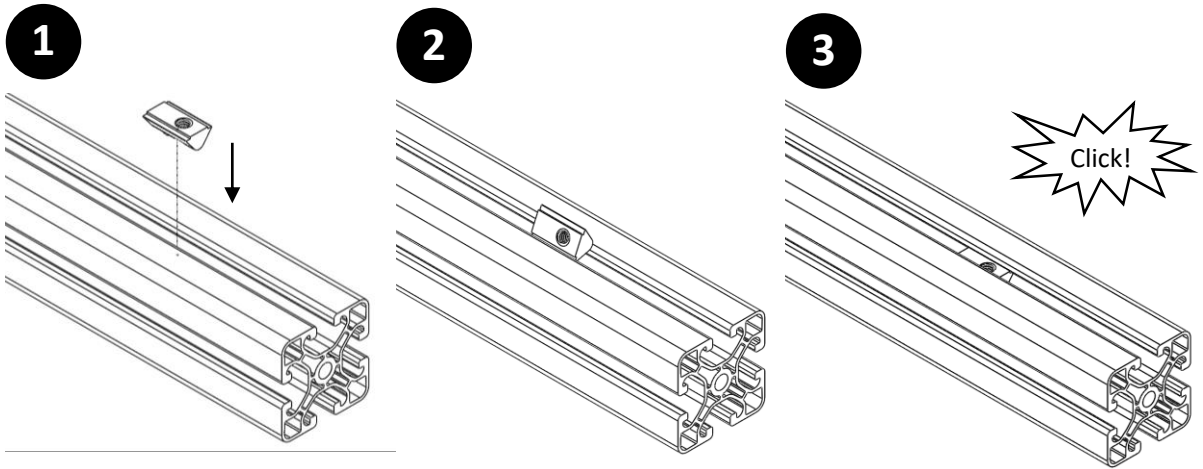


REQUIRED TOOLS:

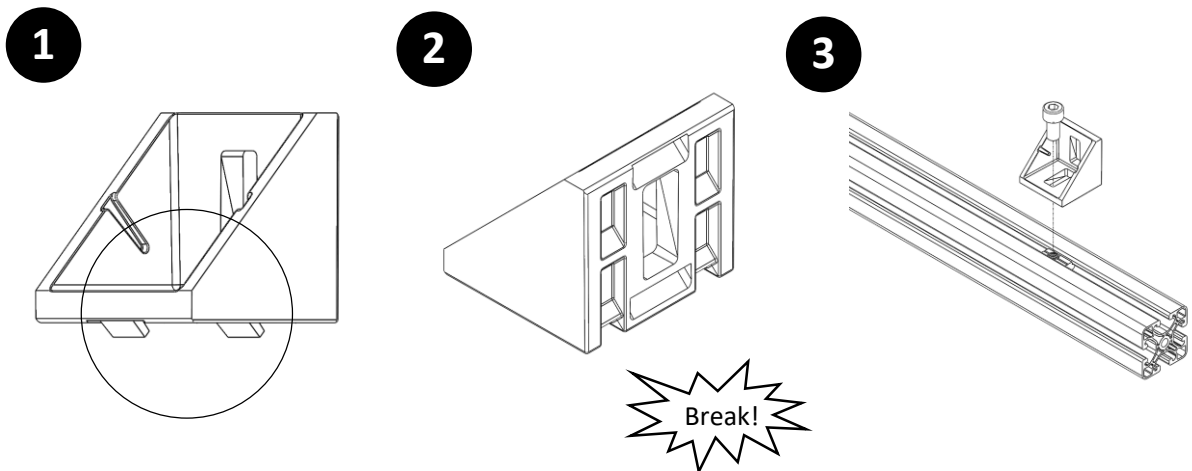


GENERAL INSTRUCTIONS

The easiest way to mount the click-in-nuts, is to slide them in from one side of the profile. But don't worry if you need to put in a click-in-nut in a profile which has both ends already closed: it is also possible to push them in the T-slot anywhere you like!



The corner brackets feature 4 little hooks to stop the bracket from rotating once it is mounted on a profile. But on some places these corner brackets are placed on a 90° angle of the T-slot. In these situations it is recommended to break off 2 of the hooks, which is easily done with a screwdriver or a pincer.

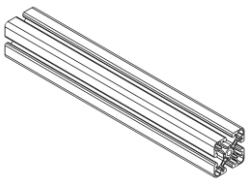


REQUIRED TOOL:



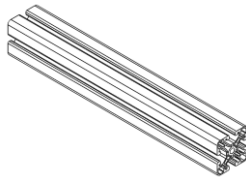
TREQ

1



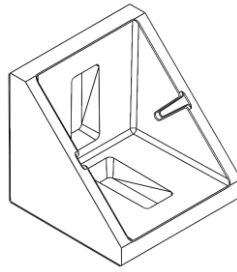
Profile 4040 L=500

2x



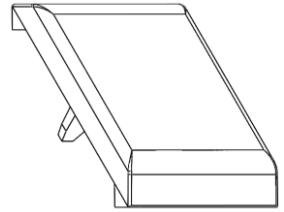
Profile 4040 L=280

3x



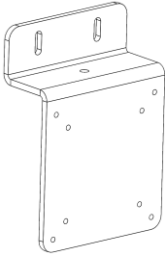
Corner 4040

10x



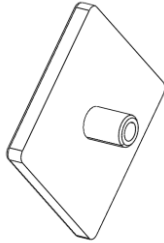
Corner Cover 4040

10x



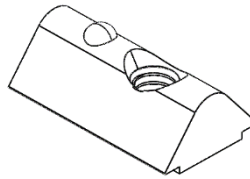
Monitor Bracket

1x



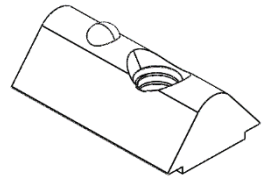
Cover 4040

4x



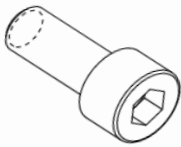
Click-in Nut M8

20x



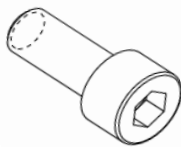
Click-in Nut M6

2x



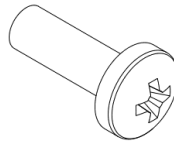
M8x16

20x



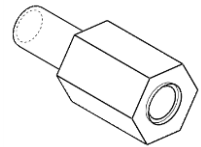
M6x16

2x



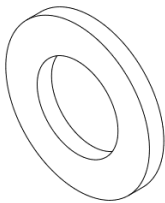
M4x12

4x



Spacer M4x10

4x



Plain Washer M6

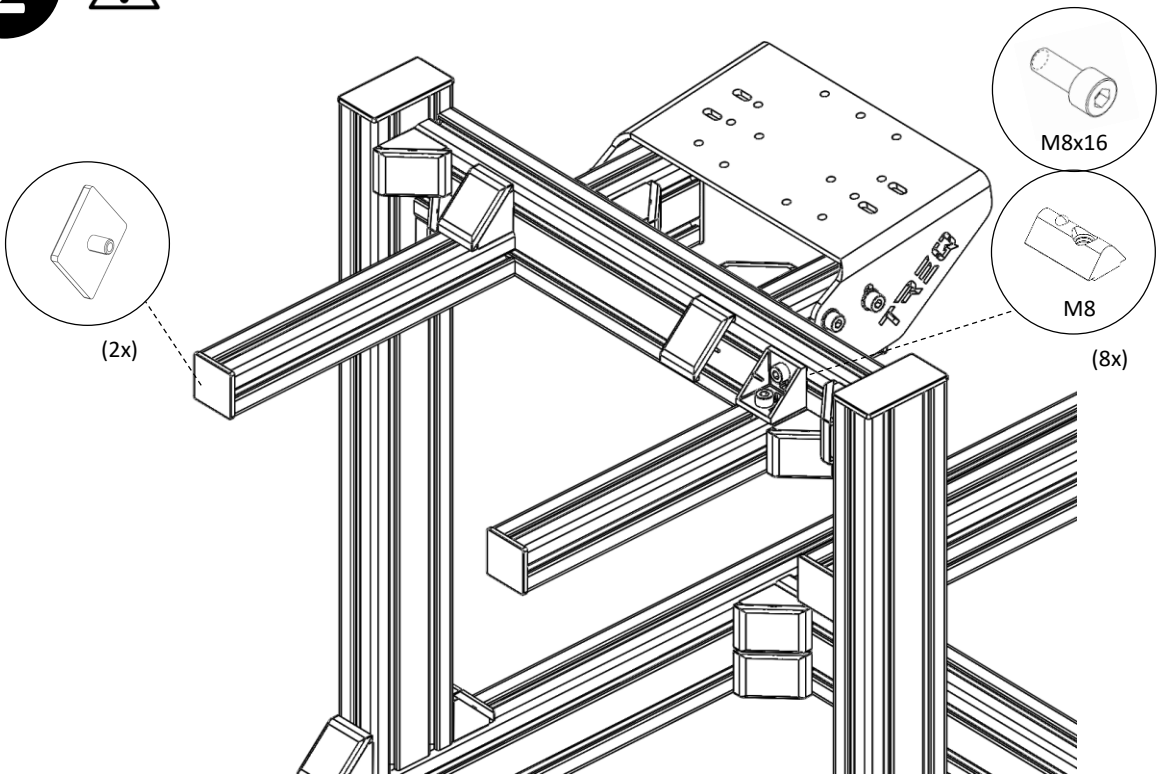
2x

TREQ

2



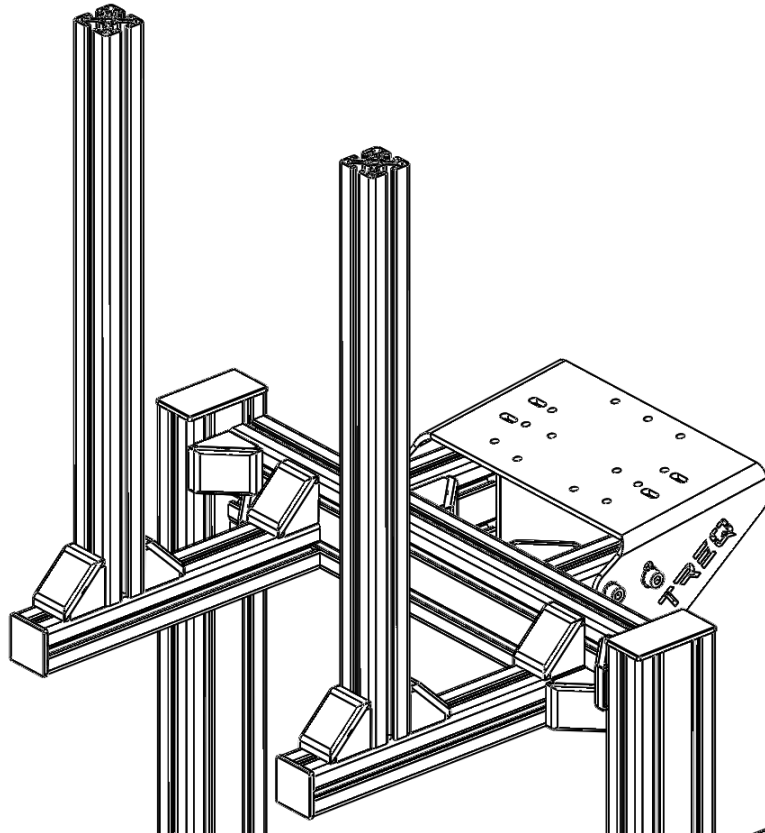
Mount the two 4040 L=280 profiles on the rig using 4 corner brackets.



3



Mount the two 4040 L=500 profiles using 4 corner brackets.

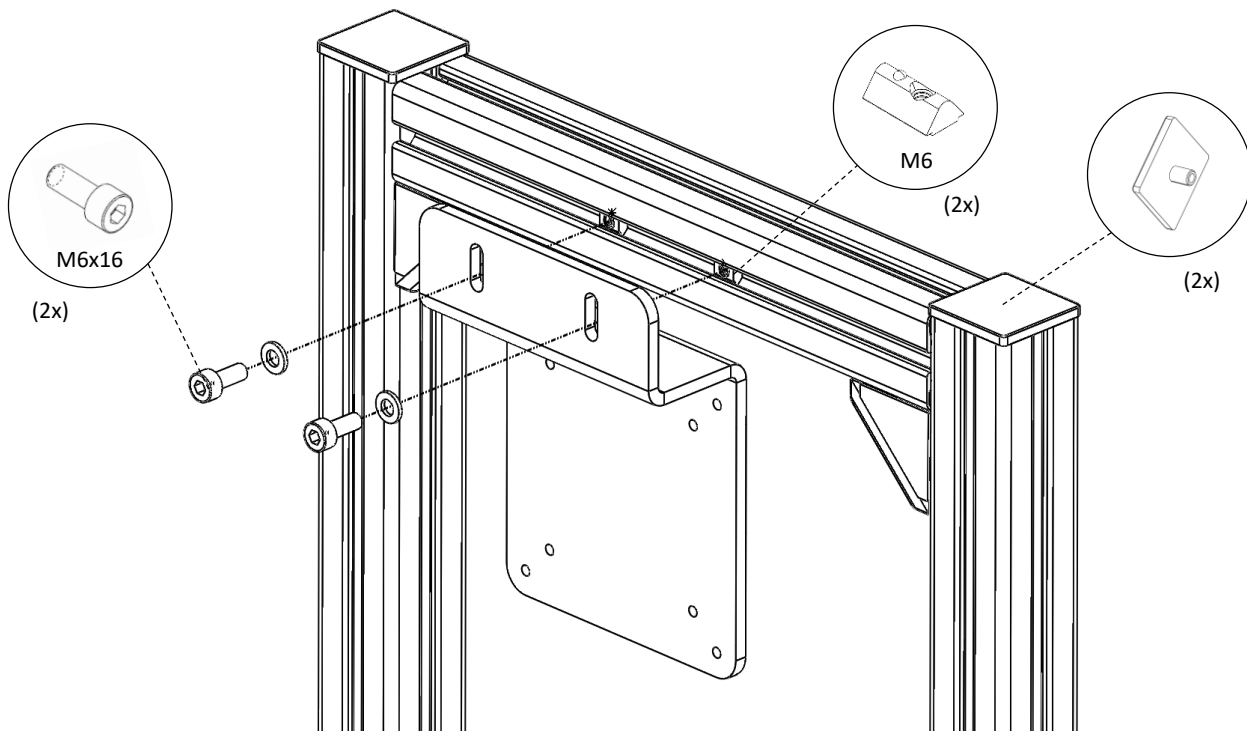


TREQ

4



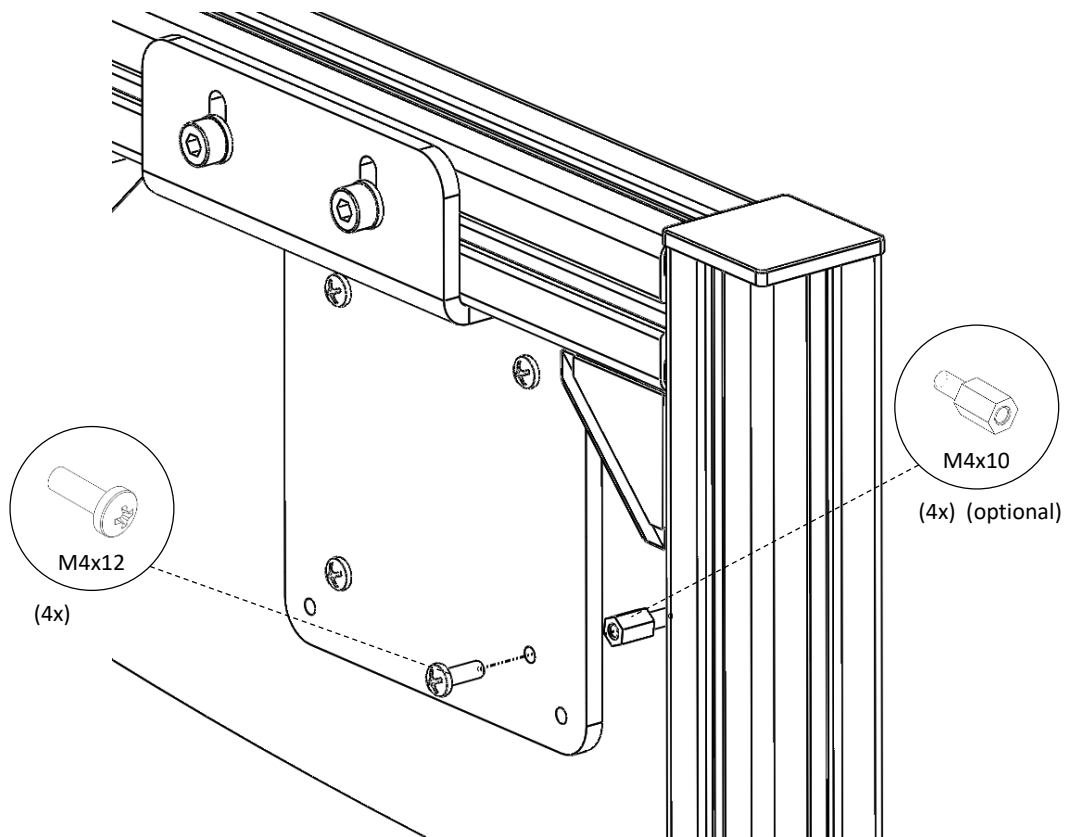
Mount the last 4040 L=280 profile using 2 corner brackets. Attach the VESA S-plate to this profile using the M6 bolts and click-in-nuts.



5



Mount the monitor to the VESA plate using the M4 bolts and the (optional) M4 spacers.



TREQ