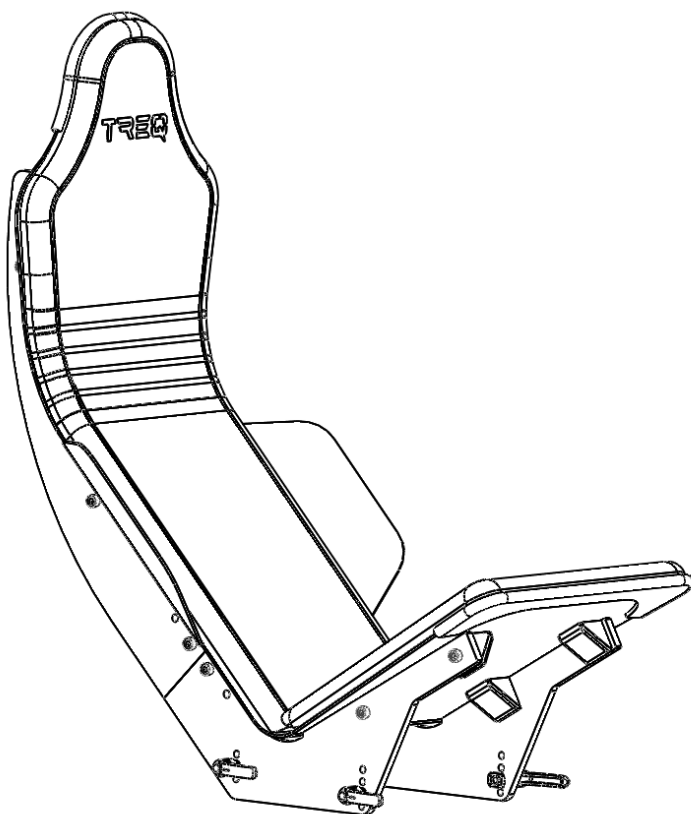
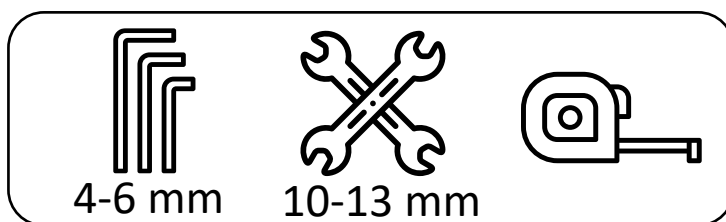


FORMULA SEAT

INSTRUCTION MANUAL

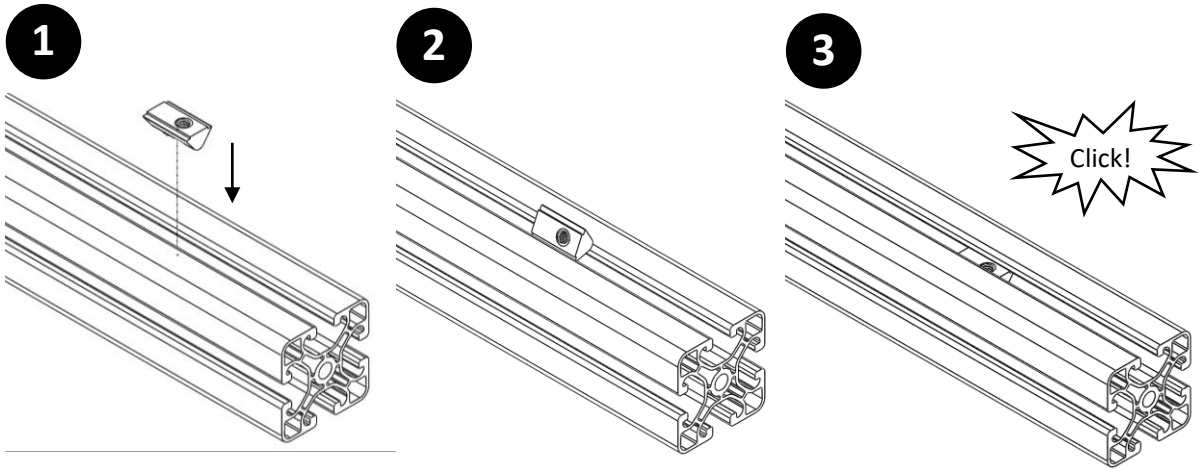


REQUIRED TOOLS:

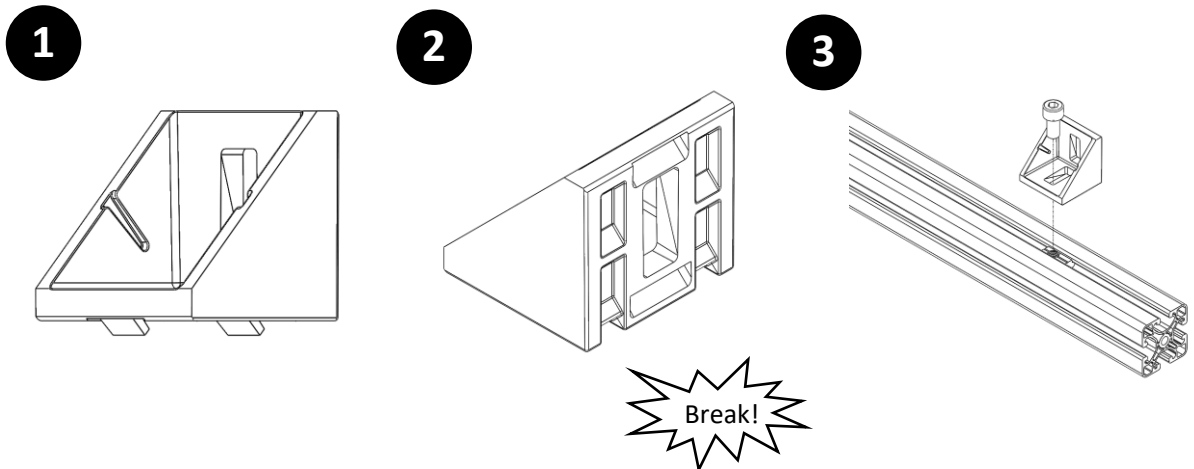


GENERAL INSTRUCTIONS

The easiest way to mount the click-in-nuts, is to slide them in from one side of the profile. But don't worry if you need to put in a click-in-nut in a profile which has both ends already closed: it is also possible to push them in the T-slot anywhere you like!



The corner brackets feature 4 little hooks to stop the bracket from rotating once it is mounted on a profile. But on some places of the rig these corner brackets are placed on a 90° angle of the T-slot. In these situations it is recommended to break off 2 of the hooks, which is easily done with a screwdriver.

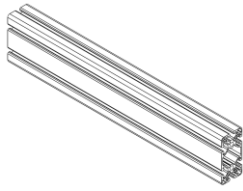


REQUIRED TOOL:



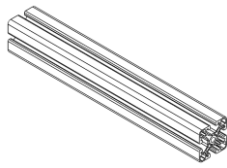
TREQ

1



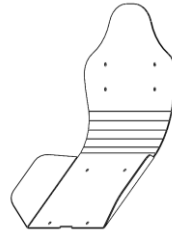
Profile 8040 L=250

1x



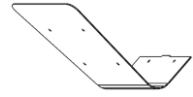
Profile 4040 L=250

1x



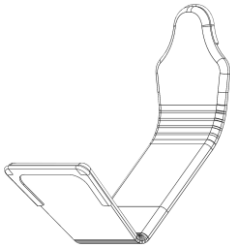
Top Plate

1x



Bottom Plate

1x



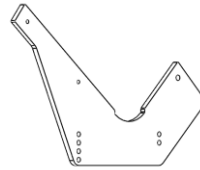
Cushioning

1x



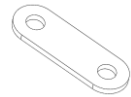
Top Frame Plate

2x



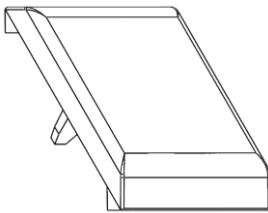
Bottom Frame Plate

2x



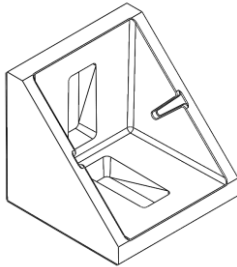
Seat Connector Plate

2x



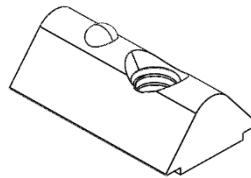
Corner Cover 4040

8x



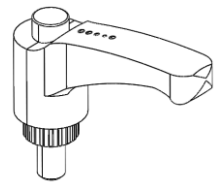
Corner 4040

8x



Click-in Nut M6

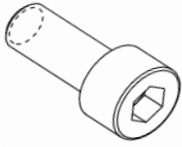
6x



Adjustable Handle

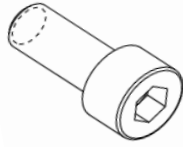
4x

TREQ



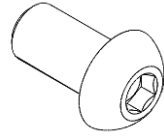
M8x25

8x



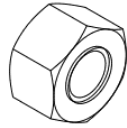
M8x20

10x



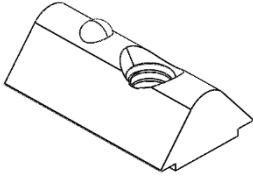
M6x16

14x



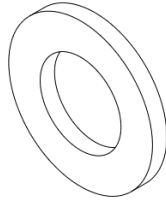
Nut M6

8x



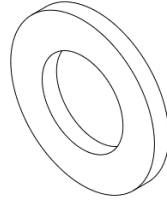
Click-in Nut M8

4x



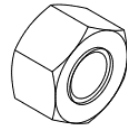
Plain Washer M6

8x



Plain Washer M8

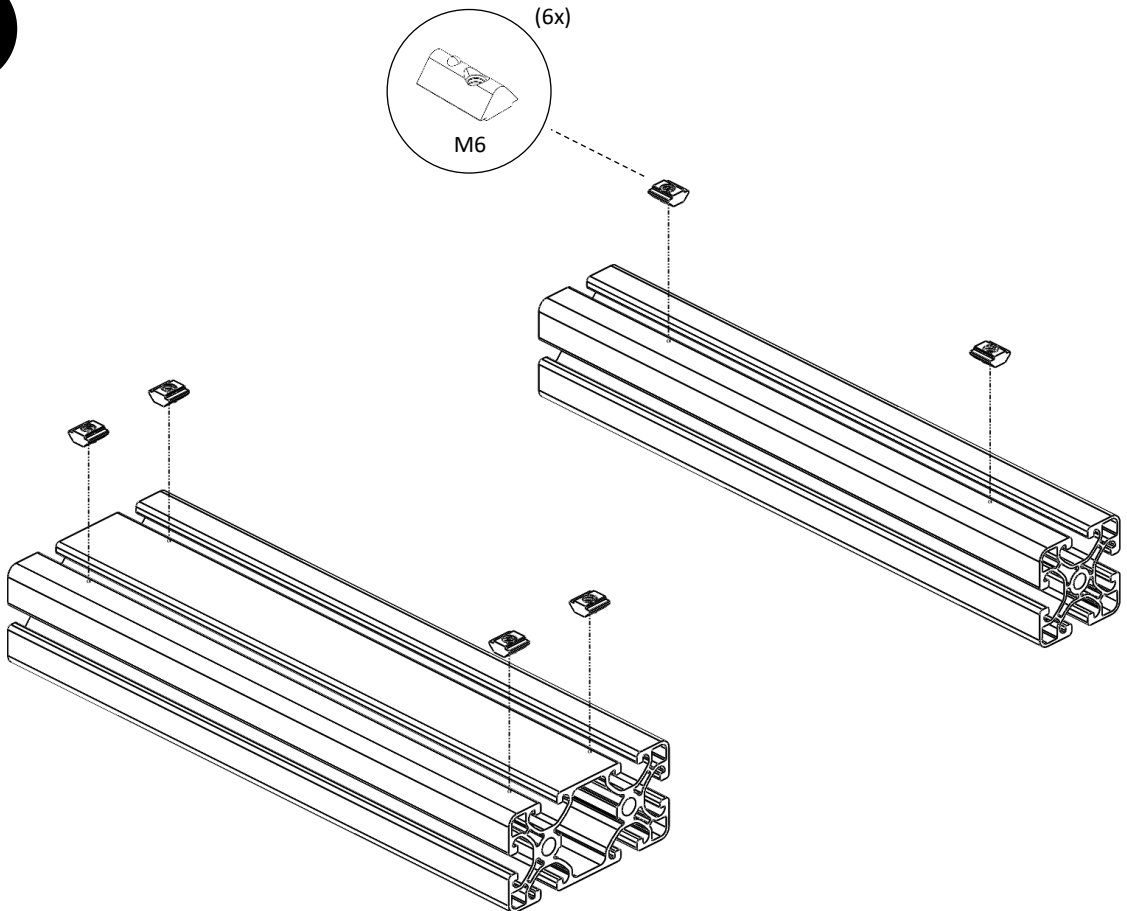
8x



Nut M8

12x

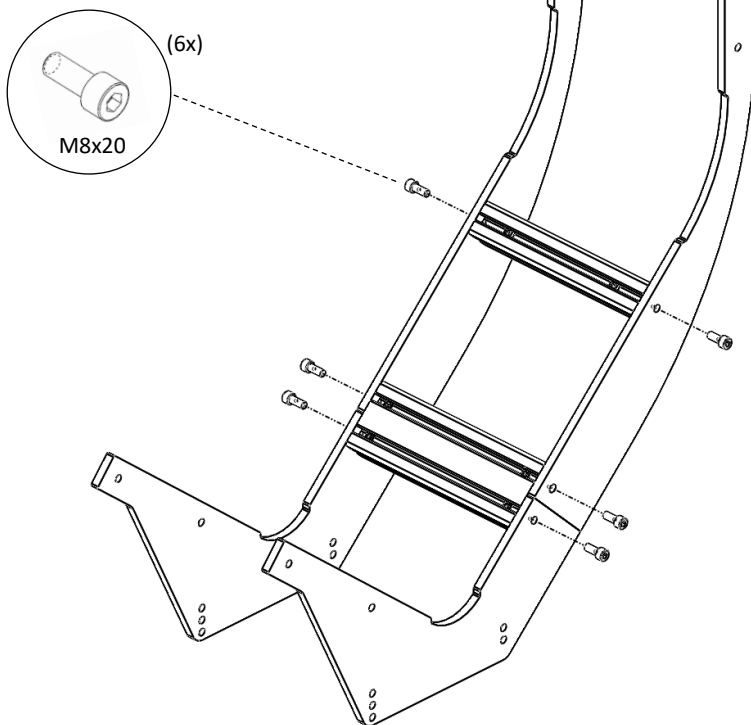
2



TREQ

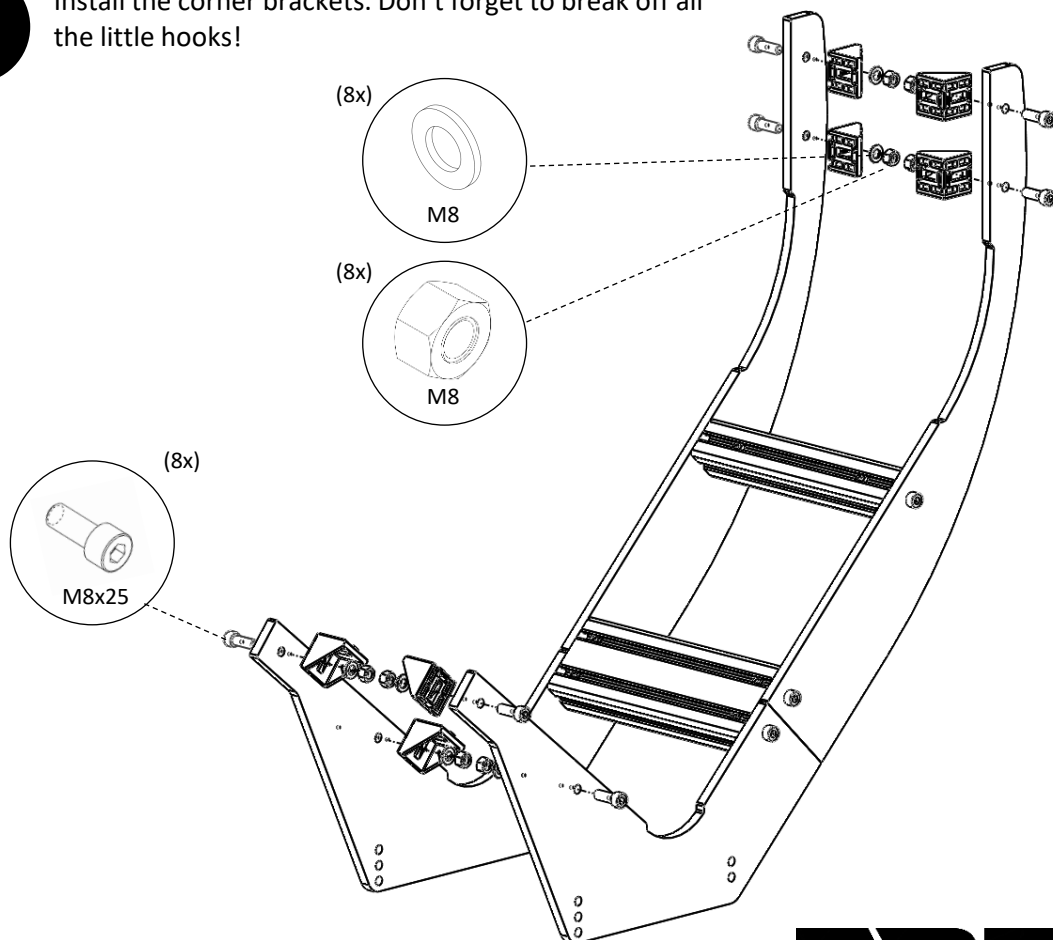
3

In this manual, we are building the seat 'stand alone', but this can be a bit heavy when mounting the seat onto the rig afterwards. You can build this step (3) directly onto the rig using STEP 8.



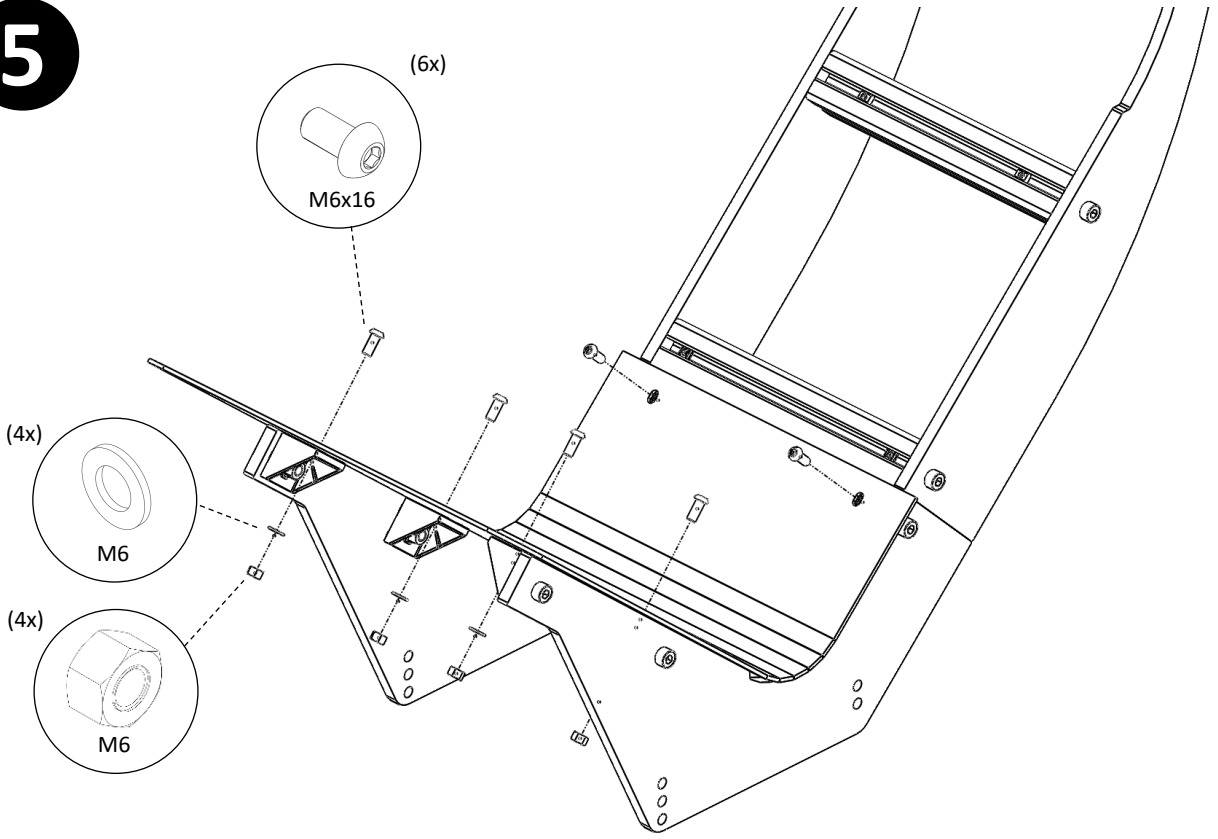
4

Install the corner brackets. Don't forget to break off all the little hooks!

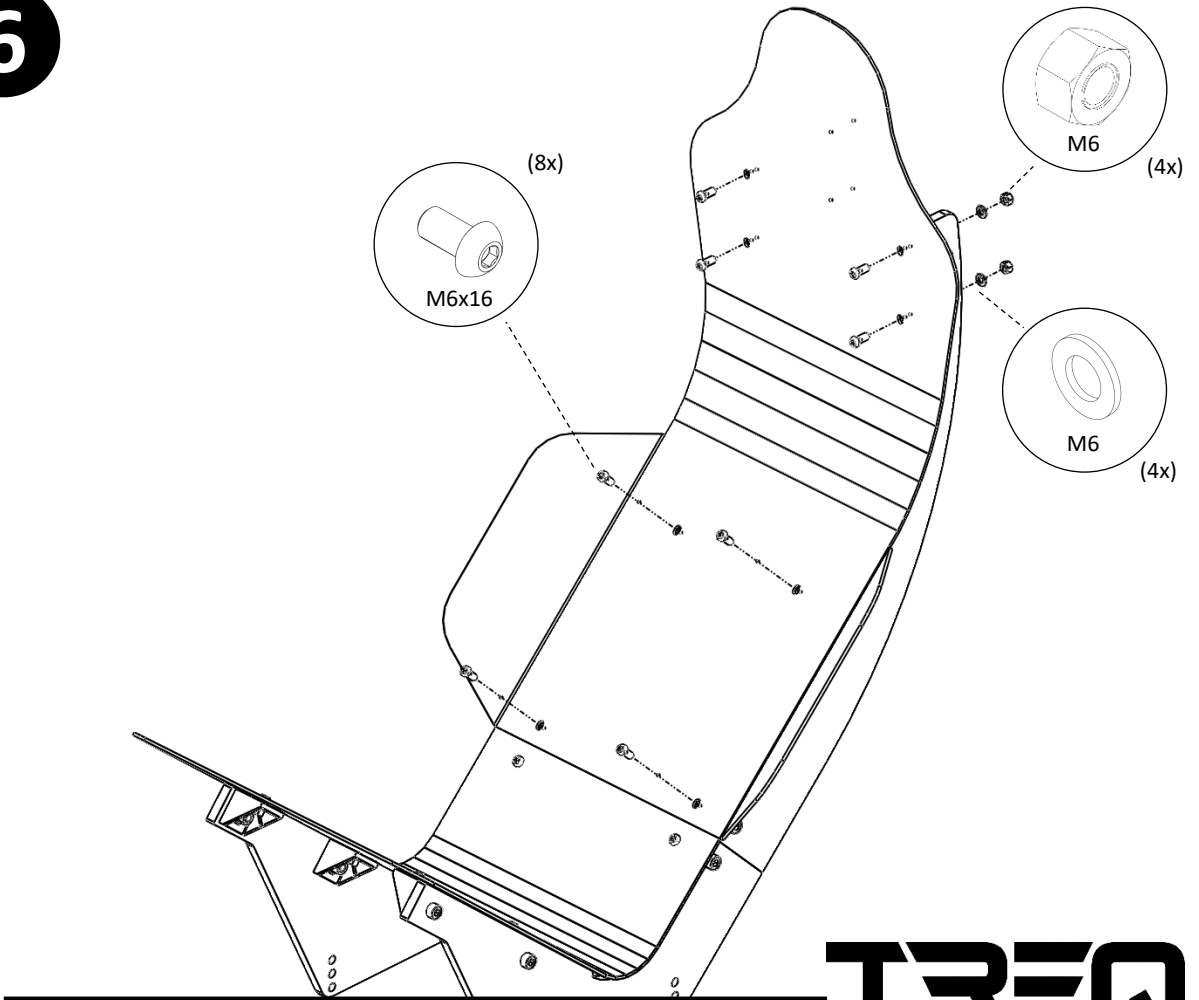


TREQ

5



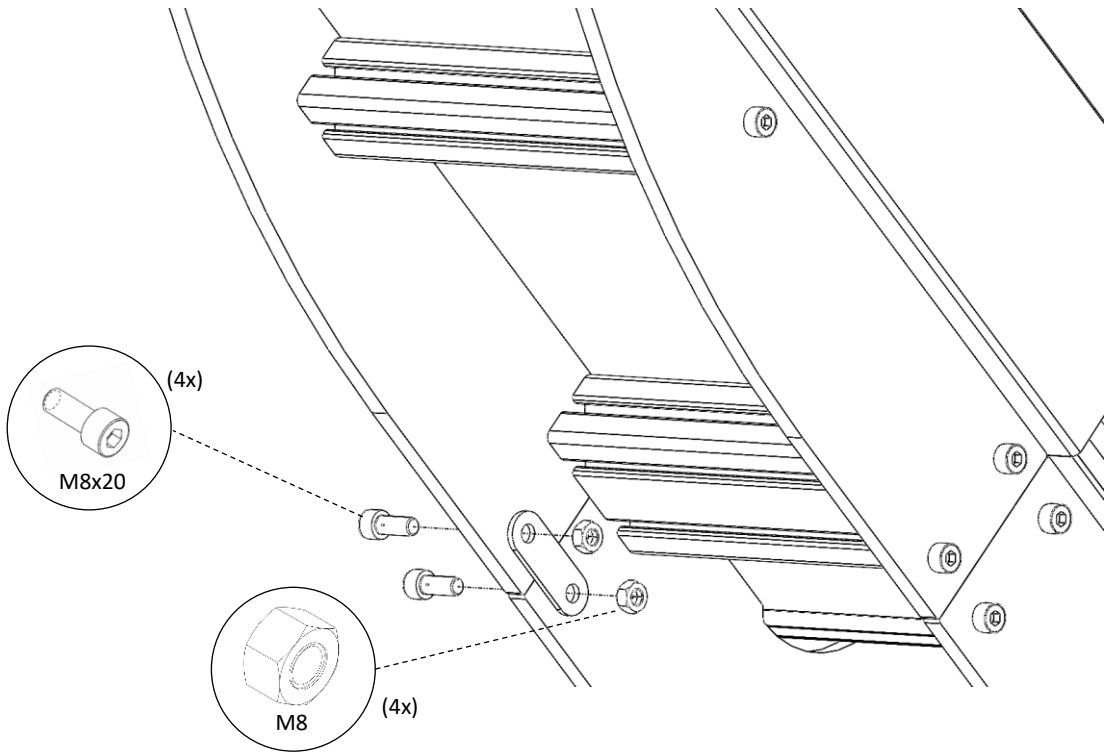
6



TREQ

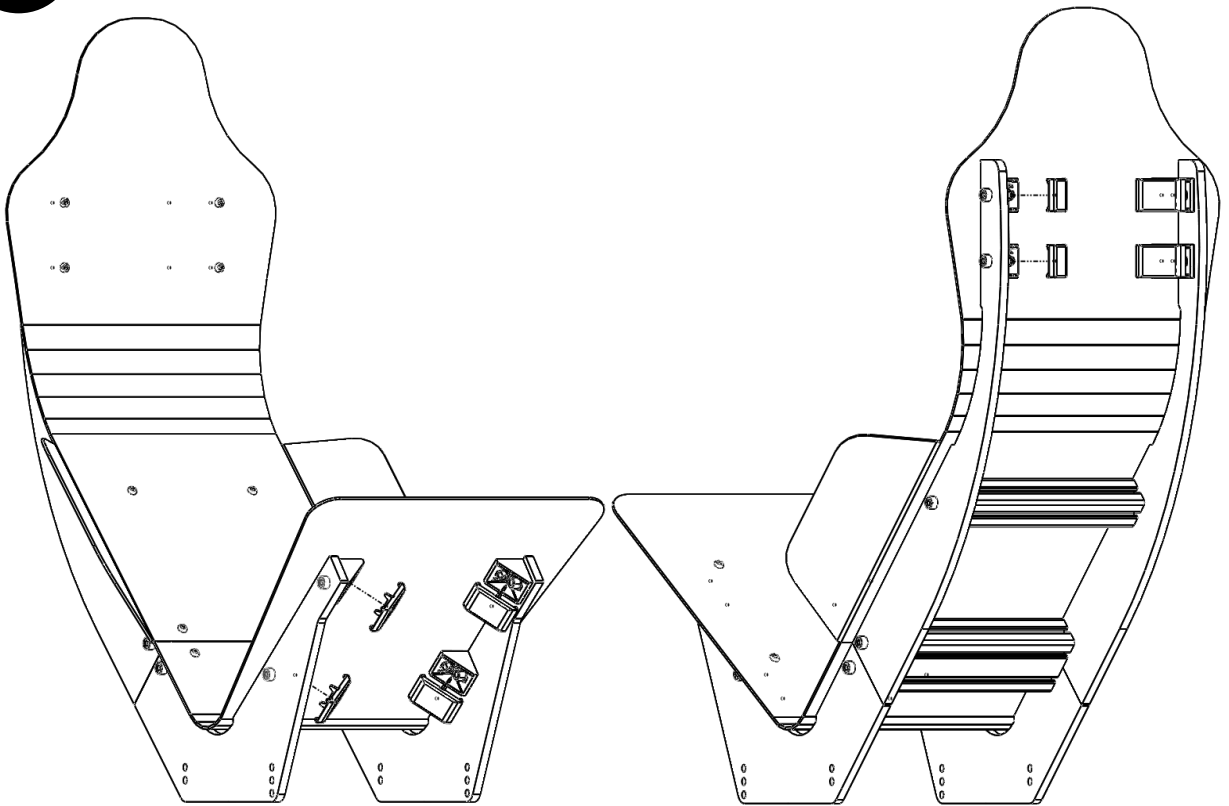
7

Mount the tiny connector plates, giving the chassis of your seat extra stiffness.



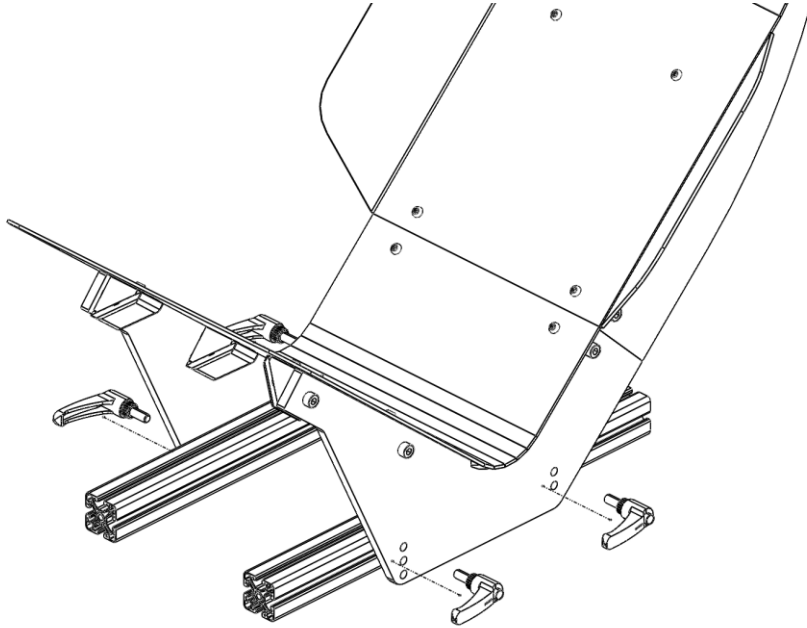
8

Place the cover caps on the top of the corner brackets, to hide the bolts and nuts inside.



TREQ

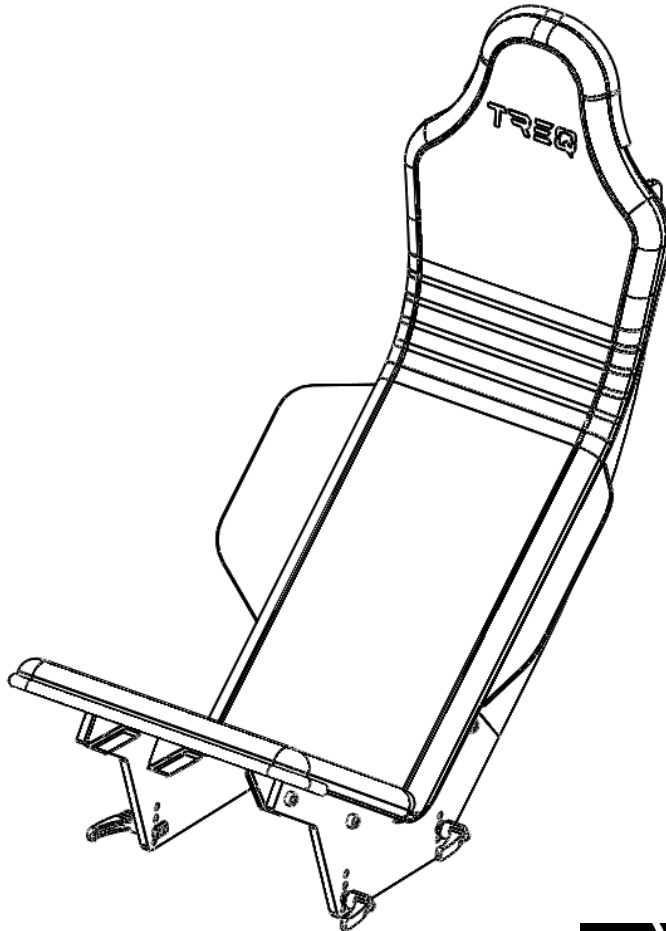
9



10



Slide the cushioning on chair. This might feel tight (especially the bottom part), but this is done to ensure they keep in place when you're racing. Try to do it with two persons if alone it feels impossible to get the cushion over the metal plates.



TREQ